



# **VGS AND TECHNOLOGIES PVT.LTD HYDERABAD**

**CONTACT US**

**PHONE: 040-27128230,**

**040-27131010**

**E-MAIL: [vgstpvt@gmail.com](mailto:vgstpvt@gmail.com)**

**WEBSITE: [vgstindia.com](http://vgstindia.com)**

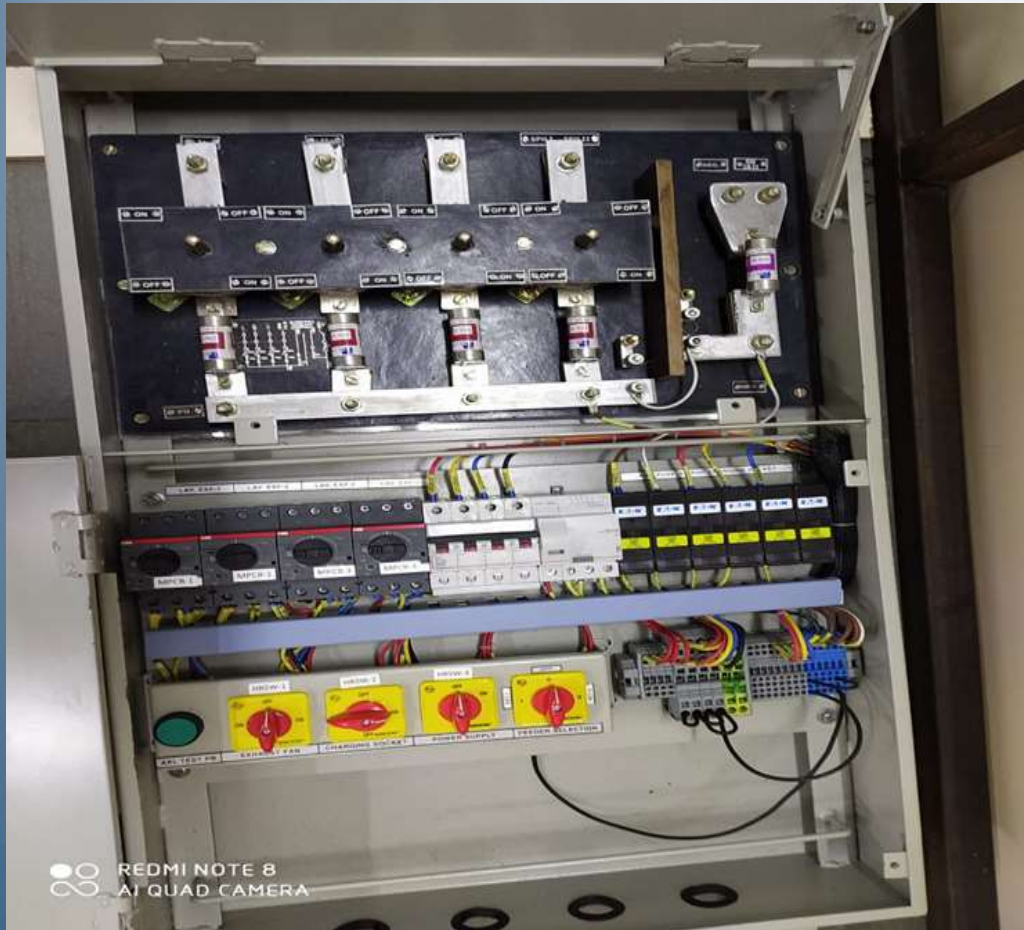
# PRODUCT INFORMATION

This product Set of Panels for LHB EOG Non –AC Coaches is designed as per the specification no: EDTS 355 is for design, manufacture, testing and supply of Switch Board Cabinet consisting all the power/control switchgear related to Coach lighting, pantry, pump control etc. for LHB EOG NON-AC Coaches suitable for 3 phase, 750 volts, 50 Hz train line system. It consist of three panels namely High voltage cubicle, Low voltage cubicle and Regulated battery charger.

# HIGH VOLTAGE CUBICLE

H.V Cubicle has disconnecting and earthing device along with high voltage fuses shall be located. The main function of this device is to separate the two feeders (input supply) and simultaneously earthing 750volts ac network of the coach. The connections to this device shall be made by removing the top cover on the front of the device.





## LOW VOLTAGE CUBICLE

The on-board /L.V. panel shall house the rotary switch panel as used in conventional coaches for distribution of light and fan the rotary switch for the feeder selection shall be provided on the panel to select the feeders as provided in the underslung HV cubicle. It may be noted that the control for the feeders selection contactors shall be on 110 volts dc only.

# REGULATED BATTERY CHARGER

The cubicle shall house the regulated battery charger along with the connectors

